



**Welcome to
Our Lady of Fatima Catholic Primary School**





WELCOME

GOD

FAMILY

FAITH

CARE

JESUS

LOVE

RESPECT

JOY

About the School



Mission Statement

**We welcome everyone
into our community
to live, love and learn together
in the light and example of
Jesus Christ.**

Our school, which looks to **Christ for the basis of its existence**, aims to show concern for all connected with the school. We see ourselves as vital to the life and worship of the parish.

Our school will be distinguished by the quality of **care, support and respect** shown between its members.

Our school aims to make worship in all forms central to the life of the school and aims to **promote the spiritual growth** of all its members.

We aim to ensure that our whole curriculum is delivered within a Catholic environment in which pupils can grow and acquire **concepts, knowledge, skills, attitudes and values** in preparation for future life.

Our school acknowledges that **each person is unique and we should strive for the fullest development of every pupil** and all those who work in the school, promoting equal opportunity and respect for all.

Our school aims to promote **tolerance, justice and understanding** in our world by forging positive links with the neighbourhood, other schools, other faiths and the world of work.



About the School



Last Ofsted
Inspection in July
2011- outstanding



Last R.E. Inspection
in October 2022 –
Good with
outstanding features



About the School

First opened in 1967 (50th Anniversary in 2017).

Originally built to serve the parish of Our Lady of Fatima, Quinton.

Seven classes of pupils of all abilities.

Children taught in own class – mixed ability.

Currently 7 teachers (including Principal and Vice Principal) supported by teaching assistants.

Wonderful established Forest School on site.



Emmaus Catholic MAC Prayer

God, Our Father, on the road to Emmaus, Jesus Your Son nurtured the disciples with the Word of Scripture and nourished their faith with the Breaking of Bread. On our journey of life, renew our communities, restore our hope, and inspire our enthusiasm for learning. Increase our commitment to education, with compassion in our hearts and dedication to the Gospel. As disciples and friends of Jesus, empower us with the courage to lead and the humility to serve Your people. Amen.

St Wulstan's Catholic Primary School, Stourport
Our Lady of Fatima Catholic Primary School, Harborne
St Ambrose Catholic Primary School, Kidderminster
St Mary's Catholic Primary School, Brierley Hill St
Joseph's Catholic Primary School, Stourbridge
Hagley Catholic High School, Hagley
St Francis Xavier Catholic Primary School, Oldbury Our
Lady and St. Hubert Catholic Primary School, Oldbury
St Gregory's Catholic Primary School, Bearwood
St Philip's Catholic Primary School, Smethwick



What is a MAC?

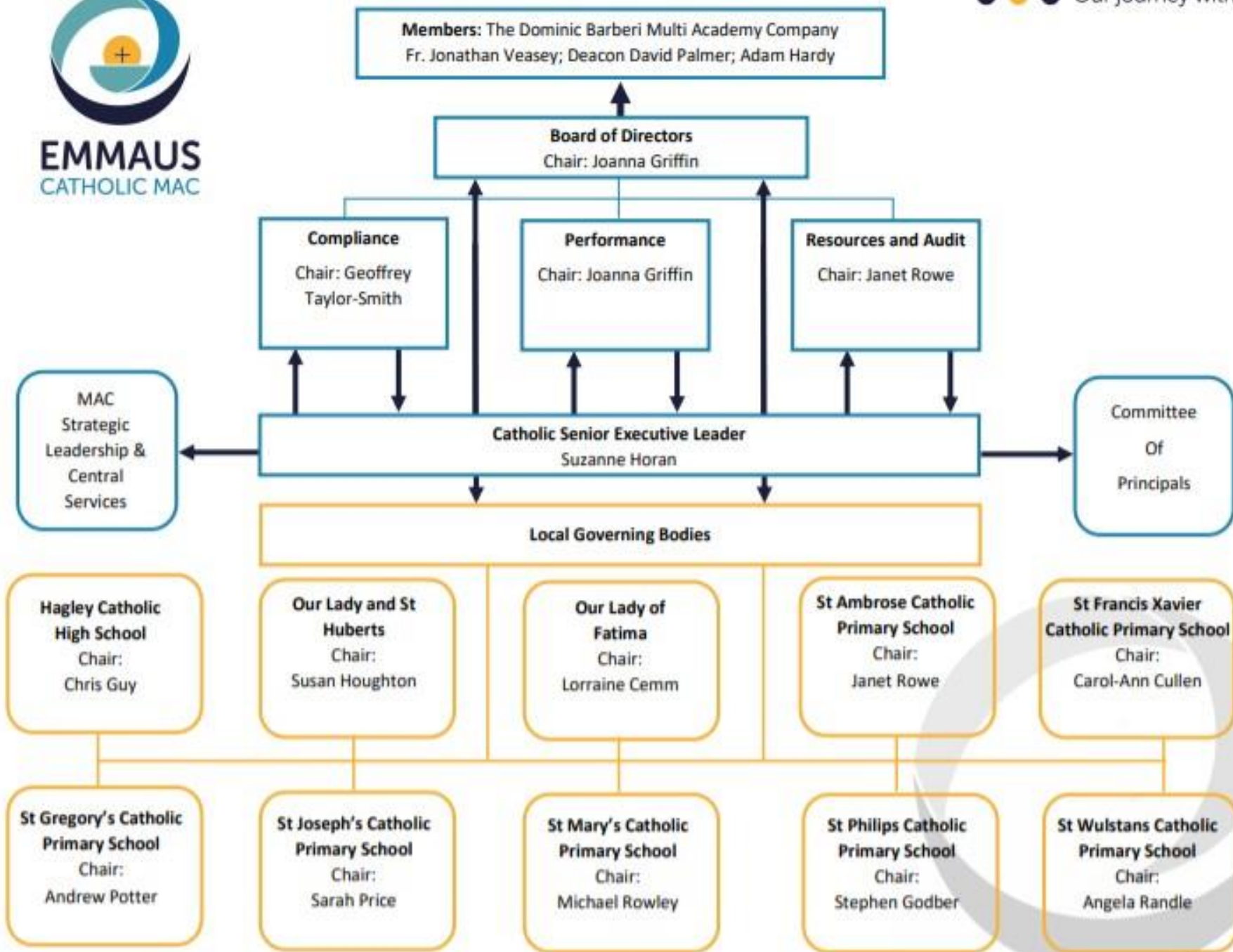
- A Multi Academy Company (MAC) is a family of Catholic schools who are committed to working together
- All MACs in our Diocese work under the ‘umbrella’ of the Dominic Barberi Trust
- All schools in our MAC have their own distinctive Catholic identity

Why be in a MAC?

- To ensure the continuation of Catholic education
- To work together to create the best possible learning environments for our children
- To share expertise, ideas and skills
- To create diverse opportunities for our children



EMMAUS
CATHOLIC MAC





EMMAUS
CATHOLIC MAC



- St Wulstan's Catholic Primary School, Stourport
- Our Lady of Fatima Catholic Primary School, Harborne
- St Ambrose Catholic Primary School, Kidderminster
- St Mary's Catholic Primary School, Brierley Hill
- St Joseph's Catholic Primary School, Stourbridge
- Hagley Catholic High School, Hagley
- St Francis Xavier Catholic Primary School, Oldbury
- Our Lady and St. Hubert Catholic Primary School, Oldbury
- St Gregory's Catholic Primary School, Bearwood
- St Philip's Catholic Primary School, Smethwick





EMMAUS
CATHOLIC MAC



The name Emmaus symbolises that we are all on a journey with our Lord.

Motto: Our Journey with Christ Mission: A family of schools, united in Christ and working as one, to provide the very best Catholic education, faith formation and personal growth, rooted in Gospel values.

Vision: Excellent Catholic education for all in the heart of our communities: nourishing faith, nurturing talent, fostering aspiration.



Admissions Criteria

- The admissions process is part of the Birmingham Local Authority co-ordinated scheme.
- The Admission Policy of the Local Governing Body of **Our Lady of Fatima Catholic Primary School** is as follows:
- The ethos of this school is **Catholic**. The school was founded by the Catholic Church to provide education for children of Catholic families. The school is governed by the Multi Academy Board of Directors, through the school's Local Governing Body as part of the Catholic Church , seeking at all times to be a witness to Jesus Christ.
- We ask all parents applying for a place here to respect this ethos and its importance to the school community. This does not affect the right of parents who are not of the faith of this school to apply for and be considered for a place here. We are a fully inclusive school.



Admissions Criteria

- The School's Admission Number for the school year beginning in September 2021 is **30**.
- If the number of applications exceeds the admission number, the Local Governing Body will give priority to applications in accordance with the criteria listed, provided that the Academy Committee are made aware of that application **before** decisions on admissions are made. If there **is over-subscription within a category**, the Academy Committee will give priority to children living closest to the school determined by shortest distance .
- A map of the parish boundary is available at the school , the parish church and the school's website.



Admissions Criteria (8)

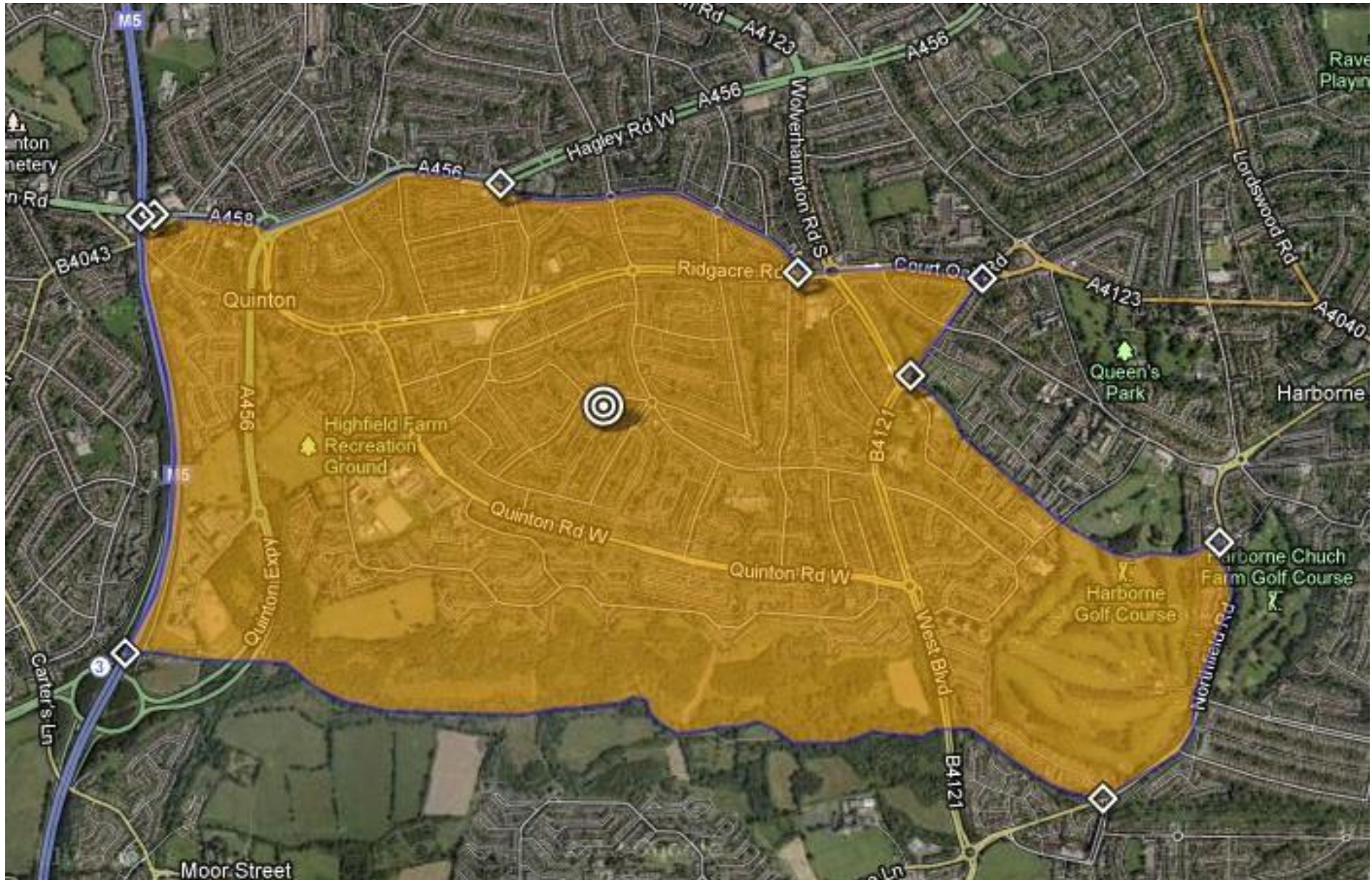
1. Baptised Catholic children who are in the care of a local authority or provided with accommodation by them (e.g. children with foster parents), or have previously been in care.
2. Baptised Catholic children living within the Parish of Our Lady of Fatima who have a brother or sister in the school at the time of admission.
3. Baptised Catholic children who have a brother or sister in the school at the time of admission.
4. Baptised Catholic children living within the Parish of Our Lady of Fatima.
5. Other Baptised Catholic children.



Admissions Criteria (8)

6. Non-Catholic children who are in the care of a local authority or provided with accommodation by them (e.g. children with foster parents), or have previously been in care.
7. Non-Catholic children who have a brother or sister in the school at the time of admission.
8. Non-Catholic children.

**Our Lady of Fatima Parish Boundary-
to be used if you think your child falls into Category 2 or 4- living
within the parish of Our Lady of Fatima.**





Admissions Criteria

September 2020 – 30 children from categories 2-8

September 2019 - 30 children from categories 2-8

September 2018 - 30 children from categories 2-8

September 2017- 30 children from categories 2-5

September 2016 – 30 children from categories 2-5

September 2015 – 30 children from categories 2-5

September 2014 – 30 children from categories 2-8

September 2013 – 30 children from categories 2-5

September 2012 – 30 children from categories 2-5

September 2011 – 30 children from categories 2-5

In 2014 4 children were admitted from category 8.

In 2018 and 2019 1 child was admitted from category 8.

In 2020 7 children were admitted from category 8.

Overall **91.6% Catholic pupils**



Applications

Parents apply (once) for all preferred schools through own local authority (e.g. Birmingham, Sandwell, Dudley etc). This is determined by the address from where your Council Tax is paid.

Parents make **preferences** not **choices**.

Schools must, and do, administer the admissions criteria completely fairly.

Once **30** places are allocated, and accepted, **there are no further places available.**



Applications

Infant classes are restricted to a maximum of 30.

‘Class size’ is governed by ‘Infant Class size legislation’.

No KS1 appeal made against this school has been successful because of this.

Parents should be **realistic** about the preferences they make.

If a local authority cannot meet parents’ preference, they will allocate a place at the nearest school where a place is available in the authority.

Applications



When the local authority has all applications, they send a list to school with every child who has the school on its' preference form.

Schools **do not** know whether it is 1st, 2nd, 3rd etc. on the preference form, and this is not taken into account.

Schools **rank all** applications according to Admissions Criteria.

Schools return the ranked list to the local authority who then match according to parents **highest** preference.

Local authorities inform parents of their allocated school (April 2021).

'Advice'



If parents do not accept the school they have been offered, the local authority is not required to make another offer.

Be sensible, be realistic, use **all** the preferences available to you wisely.

If you only apply to over-subscribed schools, you may be disappointed.

The deadline for BCC resident applications for a Reception Class place in a Birmingham Primary School, starting in September 2021 is 15th January 2021.

School places are allocated on 16th April 2021.

www.birmingham.gov.uk/schooladmissions



Applications

Parents who make a (Catholic) faith claim **must** also submit original proof of baptism **to the school** and **complete a SIF** (Supplementary Information Form).

If a SIF is not submitted before the Academy Committee ranks all applications, the child will be ranked as non-Catholic (category 8).

There are currently 203 catholic and 10 non- catholic children in the school. Parents of catholic children are urged to support the catholic education they request for their child, including attendance at Sunday Mass.



Successful Applications

Parents who are offered a place are advised to accept as soon as possible.

Parents are invited to an (evening) meeting in the summer term.

Children are invited to two sessions in the summer term.

Please note this may change due to COVID restrictions



Unsuccessful Applications

Parents who are **not** offered a place at this school but who had originally placed this school on their preference form:

- Your child **will** be placed on our waiting list
- This **does not** mean that your child will eventually be offered a place (30+ children on current waiting list)
- Appeals have not been successful because the school **always** applies the criteria fairly
- Be **realistic** about preferences

Before & After School Care



There is an onsite Before and After School Club for parents who require additional care.

There is a charge for this- from **£5.75** an hour.

Hours:

7.45 – 8.55 a.m

3.30 – 5.45 p.m

Numbers are restricted, so parents are advised to book in advance.



School Website:

<http://www.olfatima.bham.sch.uk>





Welcome to Our Lady of Fatima Catholic Primary School





Displays in the school hall enable the children to reflect on The Year of the Word





We celebrate how the children demonstrate the Gospel Values throughout the year – this eye catching display is seen at the front of the school.

We have House Saints across the school:

- St Martha
- St John Paul
- St Clare
- St Christopher



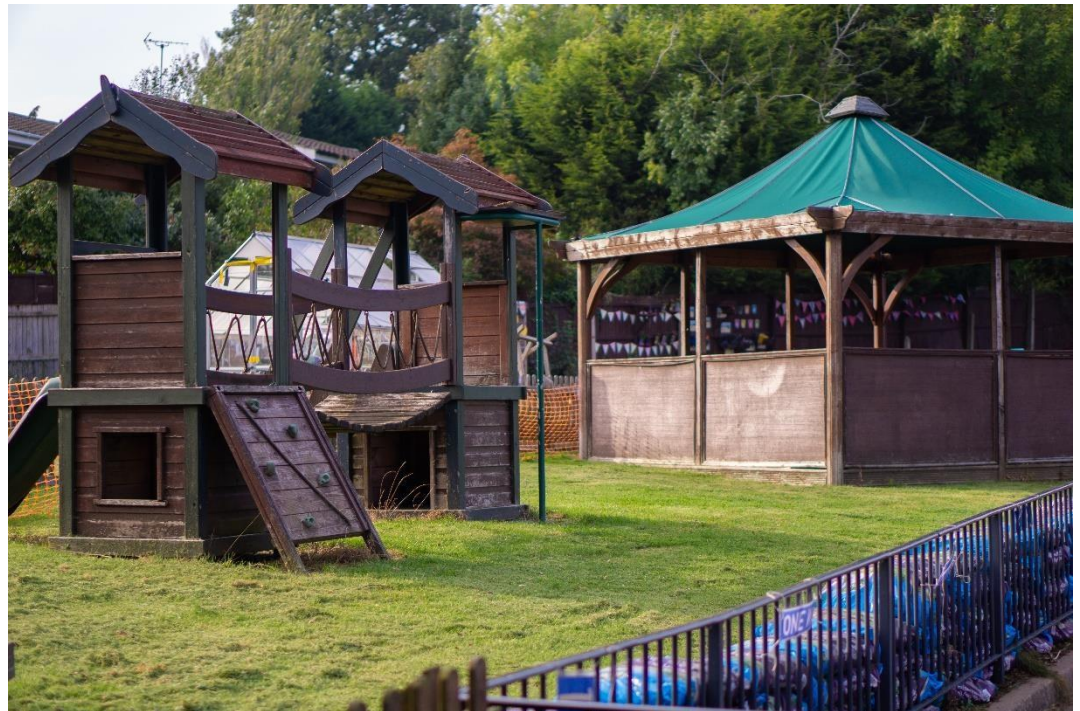


The Reception Class has a fantastic new play area with a mud kitchen, a range of equipment and a great space for the children to learn





The school has fantastic space, a huge football field, a new trim trail and tyre area, a play area for KS1 and courts for the children to play in



Prayer life is a key element to school life. We have a new Prayer Area in which the children can take part in Prayer and is an area in which they can reflect





The Love of Reading is so important and is a key element to every class and their learning. We have fantastic space on school grounds where teachers can read stories to children and where children can read in a quiet area.



We have a Forest School. Children across the school enjoy learning life skills and develop strategies to improve their mental and emotional health





Thank you

Thank you for your interest in Our Lady of
Fatima Catholic Primary School

If you have any further questions please
contact the school:

Tel: 0121 429 2900

Email: enquiry_olf@emmausmac.com